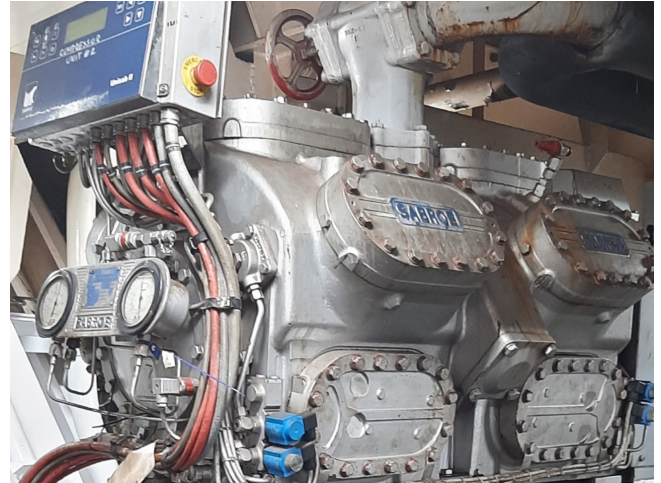


Sabroe SMC 112 S

Specifications

Marka	Sabroe
Typ	SMC 112 S
Czynnik chłodzący	Freon
kW at 0°C/+40°C	553,8
kW at -5°C/+40°C	446,2
kW at -10°C/+40°C	353,3
kW at -20°C/+40°C	211,9
kW at -30°C/+40°C	115,5
Kontrolka wydajności	✓
Wskaźniki ciśnienia	✓
Okno widokowe	✓
Panel kontrolny	✓
m ³ / h	679
Uwagi	Y.o.b. 1999
Waga kg.	2255
Rozmiary	1600x950x900 mm (LxWxH)
Stock	1



Description

Used Sabroe SMC 112 S

Used Sabroe SMC 112 S reciprocating compressor on Freon. Complete with a pressure safety gauges, sight glass and Unisab II control panel. The compressor has a displacement of 679 m³/h at 1500 RPM.

*Why choose for HOSBV? Were not only the largest used refrigeration specialist in Europe, but also, we deliver all equipment including an extensive test, warranty and industrial cleaning.

*Optional we can also arrange the logistics.

